



**SAFARI TOUR 'DUIKER':  
2-DAY LAKE MANYARA  
& NGORONGORO  
CRATER**

4 Days / 3 Nights

# Safari Tour 'Duiker': 2-Day Lake Manyara & Ngorongoro Crater

**Duration:** 4 Days / 3 Nights

**Type:** Private Safari

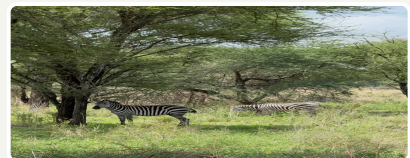
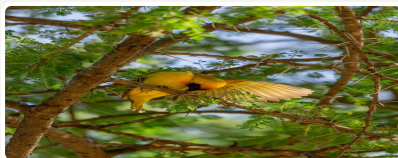
**Main Focus:** Wildlife

**Country:** Tanzania

## Safari Tour 'Duiker': 2-Day Lake Manyara & Ngorongoro Crater — Tanzania safari with Serengeti Nexus

Two focused days on Manyara and Ngorongoro. Private 4x4 Land Cruiser, experienced English-speaking guide, and hand-picked lodges. Itinerary adapts slightly to season and wildlife movements — your consultant confirms nightly camps before travel.

Pricing follows published northern-circuit tiers with **USD 50 off** each per-person bracket versus common list rates — see calculator on your proposal. Serengeti Nexus operates with the same safety, park-rule and ethical-wildlife standards you expect on a world-class Tanzanian safari.



## DESTINATIONS



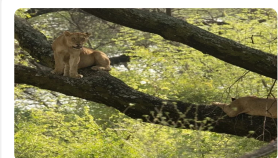
**Ngorongoro  
Conservation Area**



**Arusha Town**



**Kilimanjaro  
International Airport  
JRO**



**Lake Manyara  
National Park**

# DAY-BY-DAY ITINERARY

## Day 1: Arrival

The group arrives at Kilimanjaro Airport (JRO). Participants are met by a representative of Serengeti Nexus and transferred to a hotel in Arusha.

Note: The hotel cost only includes breakfast. Check-in starts at 2:00 PM.

### 📍 DESTINATION

#### Arusha Town



### 🏠 ACCOMMODATION

#### Ngare Sero Mountain Lodge



## Day 2: Lake Manyara

In the morning, after breakfast (around 7:30 AM), your safari guide will arrive at the hotel and inform the receptionist that he is waiting for you. After meeting your driver, you will travel to Lake Manyara National Park, and by 10:00 AM, you'll already be on your first safari!

The entire park is cut through with groundwater streams, creating a favorable environment for plant life, and as a result, attracting a variety of birds (including pink flamingos) and African forest animals.

Around lunchtime, you will visit the Maji Moto hot springs, where the driver will provide you with personal lunchboxes. After this stop, the safari will continue, and by evening, you will be transferred to your hotel to get ready for the amazing drive to Ngorongoro the next morning.

Additional notes:

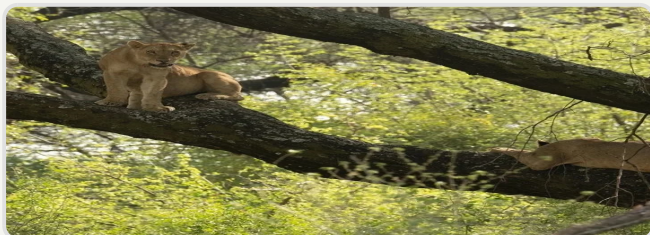
This is your first day on safari, so we kindly ask that you pay special attention to the national park visitor rules and our company's recommendations:

- It is strictly prohibited to exit the vehicle during the safari, except in designated areas. Violating this rule may result in significant fines for the company, including the revocation of its license.
- Off-road driving is also prohibited as it can cause irreparable damage to the delicate balance of the park's ecosystem.
- Smoking is allowed during the safari, but please be extremely careful when extinguishing and disposing of cigarette butts, as they are a frequent cause of fires in the savanna.
- We kindly ask that you do not put your feet on the seats or sit on the backs of the safari vehicle's seats, as such behavior quickly damages the vehicle.

Thank you in advance for your understanding!

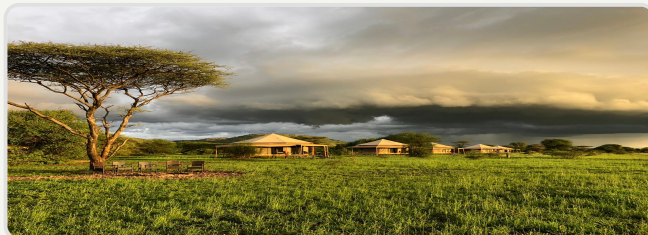
### 📍 DESTINATION

#### Lake Manyara National Park



### 🏠 ACCOMMODATION

#### Sound of Silence — Lake Manyara



## Day 3: Ngorongoro Conservation Area

On this day, it is best to leave the hotel as early as possible to maximize your chances of seeing the animals that are most active in the morning. Depending on whether you'd like to extend your safari time, breakfast can either be served at the hotel or packed in lunchboxes for you to enjoy on the go. At 7:00 AM, you will depart for Ngorongoro Conservation Area, and after about an hour, you will enter the crater.

Ngorongoro is one of the most famous and fascinating national parks in Tanzania, as it is home to the highest concentration of animal species per square kilometer. During your visit, you'll have the chance to see buffalo, elephants, lions, wildebeests, zebras, hippos, and feline species like caracals and servals. The luckiest travelers may even spot a rhinoceros, whose population is rapidly declining.

By lunchtime, you'll arrive at the lakeside, where lunchboxes will be provided. After lunch, you can either continue the safari or begin your drive back to your hotel in Arusha - whichever you prefer!

### DESTINATION

#### Ngorongoro Conservation Area

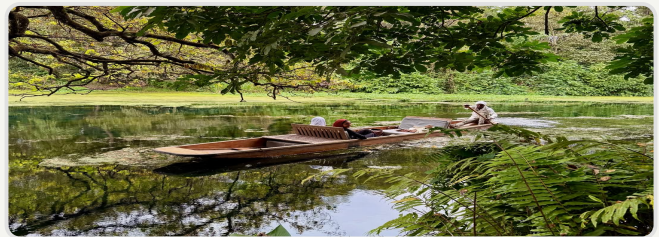


#### Arusha Town



### ACCOMMODATION

#### Ngare Sero Mountain Lodge



## Day 4: Departure

Rest in the hotel and transfer to the airport.

Note: Hotel check-out is at 10:00 AM. In case you need a late check-out before your evening flight, you have the option to extend your hotel stay for an extra fee. Let your manager know in advance if you need a late check-out.

### DESTINATION

#### Kilimanjaro International Airport JRO



### ACCOMMODATION

#### No Accommodation

# WHAT'S INCLUDED & EXCLUDED

## Included

- ⊙ All transfers described in the programme (airport meet-and-greet, lodge ? park gate)
- ⊙ Accommodation and meals as stated each night (B = breakfast, FB = full board on safari nights)
- ⊙ Bottled water, soft drinks, coffee and tea while on game drives in the vehicle
- ⊙ Private 4x4 safari Land Cruiser with pop-up roof, fridge, Wi-Fi where signal allows, charging ports
- ⊙ Certified English-speaking safari guide
- ⊙ Park entry and concession fees for the route as quoted
- ⊙ AMREF Flying Doctors air-evacuation cover for the safari segment (as per policy)
- ⊙ Binoculars (1 per vehicle) and onboard medical kit
- ⊙ 24/7 in-country support from Serengeti Nexus

## Excluded

- ⊗ International flights and airport taxes
- ⊗ Tanzania visa fees
- ⊗ Travel insurance (required — confirm cancellation and evacuation coverage)
- ⊗ Tips for guide (industry guideline often USD 30–50 per vehicle per day — at your discretion)
- ⊗ Alcoholic drinks and premium beverages at lodges
- ⊗ Hot-air balloon flights (optional add-on where offered)
- ⊗ Personal expenses, laundry and souvenirs
- ⊗ Single room supplements unless quoted

## PRICING INFORMATION

All prices are per person in USD and may vary based on season and group size.

### Low Season

April 1 - May 31

GROUP SIZE	SOLO	2 PAX	3 PAX	4 PAX	5 PAX	6+ PAX
4-day	\$1,950	\$1,186	\$1,017	\$895	\$851	\$851

### Mid Season

March 1 - March 31, November 1 - December 15

GROUP SIZE	SOLO	2 PAX	3 PAX	4 PAX	5 PAX	6+ PAX
4-day	\$1,950	\$1,186	\$1,017	\$895	\$851	\$851

### High Season

June 1 - October 31, December 16 - February 28

GROUP SIZE	SOLO	2 PAX	3 PAX	4 PAX	5 PAX	6+ PAX
4-day	\$1,950	\$1,186	\$1,017	\$895	\$851	\$851

**Group Discount:** The more travelers, the lower the price per person. Perfect for families and groups!