

A herd of wildebeest is captured in the middle of crossing a wide, muddy river. The animals are scattered across the water, some wading and others splashing. In the background, a high, eroded bank of reddish-brown earth rises, dotted with sparse green trees and bushes. The foreground shows the grassy bank from which the herd is crossing.

# **GREAT MIGRATION & RIVER CROSSING IN SERENGETI**

3 Days / 2 Nights

# Great Migration & River Crossing in Serengeti

**Duration:** 3 Days / 2 Nights

**Type:** Private Safari

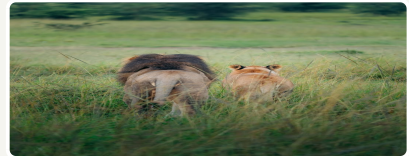
**Main Focus:** Wildlife

**Country:** Tanzania

## Great Migration & River Crossing in Serengeti — Tanzania safari with Serengeti Nexus

Serengeti-heavy itinerary for river-crossing season and big herds. Private 4x4 Land Cruiser, experienced English-speaking guide, and hand-picked lodges. Itinerary adapts slightly to season and wildlife movements — your consultant confirms nightly camps before travel.

Pricing follows published northern-circuit tiers with **USD 50 off** each per-person bracket versus common list rates — see calculator on your proposal. Serengeti Nexus operates with the same safety, park-rule and ethical-wildlife standards you expect on a world-class Tanzanian safari.



## DESTINATIONS



Serengeti National Park

# DAY-BY-DAY ITINERARY

## Day 1: Fly into Serengeti National Park

Your adventure begins with a flight to the Kogatende airstrip, located in the northern Serengeti.

After a short transfer to your tented lodge, you'll settle in, enjoy a delicious lunch, and take a moment to soak in the peaceful atmosphere. Then it's time to head out on your very first game drive — get your camera ready and safari spirit on! The action starts right away.

**From July through September**, this region becomes the stage for one of nature's most dramatic shows: the Great Migration. Wildebeest and zebra herds cross the Mara River in search of fresh grazing — and with them come predators.

You'll be exploring in open-sided safari vehicles, which allow for the immersive experience — especially during exciting moments like river crossings or predator sightings. If you'd like to have a closed-type vehicle, let us know in advance!

Note: Flights are not included in the tour price - please let us know the port of your departure for safari, and we will assist with the flight booking. Most flights arrive in the first half of the day, and your driver-guide will be waiting for you right on the airstrip.

### DESTINATION

#### Serengeti National Park



### ACCOMMODATION

#### Kubu Kubu Tented Lodge



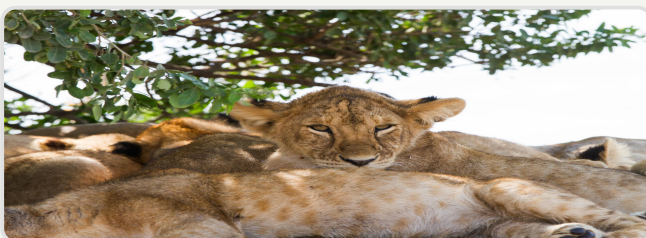
## Day 2: Serengeti National Park — Kogatende

Your second day in Kogatende. The Mara River flows through the Kogatende area, making a border between Serengeti and Kenya's Masai Mara. It is across the Mara River that hundreds of thousands of wildebeests, zebras and other grazing animals make the transition during the annual Great Migration. Typically, this migration occurs in mid-July - late August every year. It is a phenomenon that attracts National Geographic, Animal Planet, Discovery Channel and other renown wildlife programs to conduct documentaries and is one of the reasons the Serengeti is a World Heritage Site.

Your Serengeti Nexus guide will share about the migration in a special way, as a passionate Tanzanian national that understands the important relationship between the wild animals and the land of East Africa.

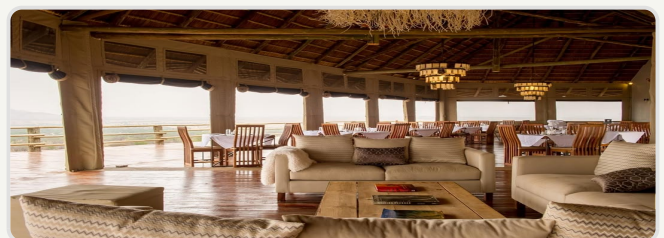
### DESTINATION

#### Serengeti National Park



### ACCOMMODATION

#### Kubu Kubu Tented Lodge



## Day 3: Flight out of Serengeti

Today, you'll embark on an unforgettable adventure: an airplane flight over the picturesque landscapes of Tanzania. If you'd like to have a short morning game-drive, we recommend that you have breakfast as early as possible — the guide will try to find exciting animal sightings on the way to the airstrip. Another option is to pack up without a rush, have breakfast and leave the lodge in time for your departure flight. You can choose what's best for you on the spot - the guide will accommodate your wish!

### 📍 DESTINATION

**Serengeti National Park**



### 🏠 ACCOMMODATION

**No Accommodation**

## WHAT'S INCLUDED & EXCLUDED

### Included

- ☑ All transfers described in the programme (airport meet-and-greet, lodge ? park gate)
- ☑ Accommodation and meals as stated each night (B = breakfast, FB = full board on safari nights)
- ☑ Bottled water, soft drinks, coffee and tea while on game drives in the vehicle
- ☑ Private 4x4 safari Land Cruiser with pop-up roof, fridge, Wi-Fi where signal allows, charging ports
- ☑ Certified English-speaking safari guide
- ☑ Park entry and concession fees for the route as quoted
- ☑ AMREF Flying Doctors air-evacuation cover for the safari segment (as per policy)
- ☑ Binoculars (1 per vehicle) and onboard medical kit
- ☑ 24/7 in-country support from Serengeti Nexus

### Excluded

- ⊗ International flights and airport taxes
- ⊗ Tanzania visa fees
- ⊗ Travel insurance (required — confirm cancellation and evacuation coverage)
- ⊗ Tips for guide (industry guideline often USD 30–50 per vehicle per day — at your discretion)
- ⊗ Alcoholic drinks and premium beverages at lodges
- ⊗ Hot-air balloon flights (optional add-on where offered)
- ⊗ Personal expenses, laundry and souvenirs
- ⊗ Single room supplements unless quoted

# PRICING INFORMATION

All prices are per person in USD and may vary based on season and group size.

## Low Season

April 1 - May 31

GROUP SIZE	SOLO	2 PAX	3 PAX	4 PAX	5 PAX	6+ PAX
3-day	\$3,675	\$2,236	\$1,917	\$1,687	\$1,604	\$1,604

## Mid Season

March 1 - March 31, November 1 - December 15

GROUP SIZE	SOLO	2 PAX	3 PAX	4 PAX	5 PAX	6+ PAX
3-day	\$3,675	\$2,236	\$1,917	\$1,687	\$1,604	\$1,604

## High Season

June 1 - October 31, December 16 - February 28

GROUP SIZE	SOLO	2 PAX	3 PAX	4 PAX	5 PAX	6+ PAX
3-day	\$3,675	\$2,236	\$1,917	\$1,687	\$1,604	\$1,604

**Group Discount:** The more travelers, the lower the price per person. Perfect for families and groups!