

A romantic couple is shown from behind, embracing each other in a vast savanna landscape at sunset. The man is wearing a light blue shirt and the woman is wearing a white top with a red sash. They are holding glasses of wine, suggesting a celebratory occasion. The sky is filled with soft, golden light from the setting sun, with some clouds catching the light. The overall mood is serene and romantic.

**LUXURY HONEYMOON
ESCAPE: ARUSHA
NATIONAL PARK,
NGORONGORO CRATER
& SERENGETI -
ROMANTIC BONUS
INSIDE!**

6 Days / 5 Nights

Luxury Honeymoon Escape: Arusha National Park, Ngorongoro Crater & Serengeti - Romantic Bonus Inside!

Duration: 6 Days / 5 Nights

Type: Private Safari

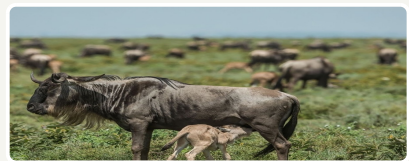
Main Focus: Wildlife

Country: Tanzania

Luxury Honeymoon Escape: Arusha National Park, Ngorongoro Crater & Serengeti - Romantic Bonus Inside! — Tanzania safari with Serengeti Nexus

Private pacing, premium camps and romantic touches on request. Private 4x4 Land Cruiser, experienced English-speaking guide, and hand-picked lodges. Itinerary adapts slightly to season and wildlife movements — your consultant confirms nightly camps before travel.

Pricing follows published northern-circuit tiers with **USD 50 off** each per-person bracket versus common list rates — see calculator on your proposal. Serengeti Nexus operates with the same safety, park-rule and ethical-wildlife standards you expect on a world-class Tanzanian safari.



DESTINATIONS



Serengeti National Park



Ngorongoro Conservation Area



Arusha National Park



Arusha Town



Kilimanjaro International Airport JRO



Lake Manyara National Park

DAY-BY-DAY ITINERARY

Day 1: Arrival

The group arrives at Kilimanjaro Airport (JRO). Participants are met by a representative of Serengeti Nexus and transferred to a hotel in Arusha.

Note: Check-in starts at 2:00 PM.

DESTINATION

Arusha Town



ACCOMMODATION

Ngare Sero Mountain Lodge



Day 2: Walking safari in Arusha National Park

Arusha National Park is one of the most exceptional and conveniently located safari destinations in northern Tanzania. Despite its relatively small size, the park boasts unmatched geographical diversity — from the rainforest slopes of Mount Meru to the scenic Momella Lakes and wide savannah plains. This variety offers a truly rich and immersive safari experience.

One of the unique highlights of Arusha is the opportunity to go on foot — it's one of the few parks in Tanzania where walking safaris are allowed. Accompanied by an armed ranger, you'll walk through the acacia-dotted bushland, where encounters with giraffes, bushbuck antelopes, warthogs, and buffalo are possible from as close as 20–30 meters. The ranger will ensure your safety while sharing fascinating insights about the ecosystem and wildlife behavior.

After your 1.5-hour guided bush walk, you'll continue the adventure in a traditional Land Cruiser safari vehicle toward the park's most picturesque gem — Momella Lakes. Here you can spot flamingos, hornbills, ibises, pelicans, vultures, and many other of the 200+ bird species that call the park home. If you're interested in learning more about the park's history and conservation efforts, ask your guide to stop at the Ngurdoto Museum for a thoughtful glimpse into local conservation challenges.

In the late afternoon, your journey continues toward the lush highlands of Karatu, where you'll check in at Gibbs Farm—one of Tanzania's most exclusive retreats. With its historic charm, organic gardens, and panoramic views of the Great Rift Valley, Gibbs Farm offers the perfect blend of refined comfort and deep connection to nature.

DESTINATION

Arusha National Park



ACCOMMODATION

Gibb's Farm



Day 3: Mto wa Mbu village walk

Your second morning begins with a cultural experience in the vibrant village of Mto wa Mbu, home to over 120 different tribes living side by side. This colorful community is full of life, stories, and warmth. You'll stroll through bustling markets, see traditional homes, and meet local artists, farmers, woodcarvers, and banana beer brewers. At the banana plantation, you'll learn about the dozens of banana varieties and how they're used in everything from meals to paintings and even construction. It's a joyful, easygoing walk through daily Tanzanian life — curious, flavorful, and full of smiles.

By midday, you'll return to Gibbs Farm. There's plenty to explore at your own pace! Choose a garden or forest walk, learn to roast your own coffee, join a birdwatching session or the afternoon storytelling by the Tembo fire. Adventurous couples can take bicycles out for a scenic ride through the village or into the lush highlands.

Or simply unwind: book a massage treatment (available at an extra cost), sip tea on your veranda, or catch the golden sunset over the Rift Valley gardens. At Gibbs Farm, every corner invites you to slow down and enjoy—together.

📍 DESTINATION

Lake Manyara National Park



🏠 ACCOMMODATION

Gibb's Farm



Day 4: Ngorongoro Conservation Area

Today you are going to the Legendary Ngorongoro Crater! Your day will begin early in the morning, when your guide arrives to drive you to the Ngorongoro Crater, part of the Ngorongoro Conservation Area. The Crater is somewhat reminiscent of The Lost World by Sir Arthur Conan Doyle: here you will witness tens of thousands of wild animals living in the massive crater left by a huge ancient volcano. The actual crater is relatively small, when you consider that it is home to the most variety of animals per square meter than anywhere else in the world! Here, you are sure to see a great number of animals within close proximity to one another.

The descent into the crater will take about half an hour of driving. The road passes through beautiful, lush forests with great scenery. Your safari guide will make a stop to see the 'look out' which is a place offering a stunning panoramic view of the entire crater. Contrary to popular myth, animals can go outside the caldera. However, most of them are safe and comfortable inside the caldera which provides an unlimited supply of fresh grass for grazers and easy prey for predators. Therefore, they prefer to remain in the crater t all the time.

Elephants, buffaloes, antelopes, lions, cheetahs, zebras and other African animals can be seen in Ngorongoro Crater. This is one of the few places in Africa where rhinos are found, although, remember that they are an endangered species, so there are very few of them. One animal that is absent are giraffes; you will not spot any of them in the crater because, due to the build of their bodies, including legs and long necks, they cannot walk down into the crater.

After your morning game drive around the crater, you will stop at the picnic area next to Lake Magadi for a snack and rest. This place is popular with various birds, including kites, who sometimes try to steal food right from the table! While not dangerous, at all, it is a good idea not to leave any food unattended. One of the draws of Lake Magadi are the hippos that live in the area. You're sure to enjoy watching them while you eat lunch. These huge animals stay close to the shore and often surface to get air. If you do see one walking out of the water, give it plenty of space. Due to the large number of animals and endemic plants, Ngorongoro Conservation Area is a UNESCO World Heritage Site and renowned for its natural significance in the world.

Please do not feed animals in Ngorongoro or any other parks in Tanzania. Even if you really want to treat a small bird or monkey, you should not do this - you will only harm them. Human food disrupts the natural diet of animals and can lead to their early death!

Remember, this is not just our request. This is a law which is enforced by park rangers. Any person caught feeding wildlife or violating other park rules may be fined.

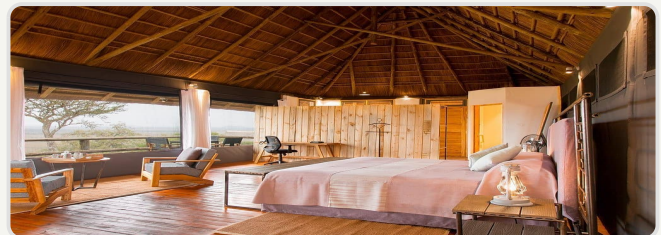
📍 DESTINATION

Ngorongoro Conservation Area



🏠 ACCOMMODATION

Lahia Tented Lodge



Day 5: Serengeti National Park — Seronera

Today you will go to the most famous safari park in the world - Serengeti. This is one of the largest parks in Tanzania and has a large population of wildlife. Here, you are sure to see: lions, antelopes, elephants, giraffes, buffaloes and zebras. There is a good chance of spotting cheetahs, serval cats and other rare animals of the African savannah. The Serengeti is a designated UNESCO World Heritage Site, chosen because of its important ecosystem, the dense population of animals and the annual Great Migration. Serengeti was the inspiration for Disney's "Lion King" feature film, but life here is not a cartoon - it is pure, wild and beautiful. The day will take place in the central Serengeti, in a remarkably beautiful area called Seronera.

📍 DESTINATION

Serengeti National Park



🏠 ACCOMMODATION

Lahia Tented Lodge



Day 6: Serengeti National Park — Seronera

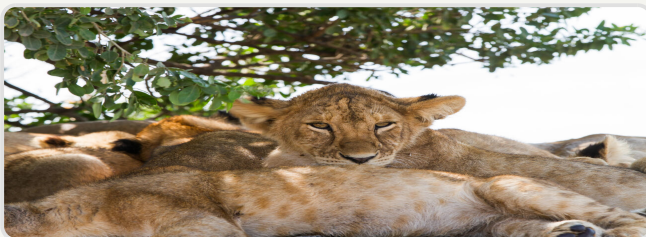
Your adventure continues in the central part of the Serengeti. Seronera is a huge space, brimming with life. It is impossible to view it all in one day; today, your guide will show you new places and interesting animals, so that you can get a full perspective of Serengeti's Seronera. It is in the Serengeti that the rarest African animals live: rhinos, leopards, serval cats and caracals. This second day increases your chances of seeing these rare animals in the wild.

After an exciting afternoon game drive, you will settle into a cozy spot outside your lodge with a view of the African savannah. As the sun sets, the sky bursts into vibrant oranges, pinks, and purples. Having a snack and a drink against this stunning backdrop is a perfect way to savor the moment!*

* Please check the provided set of snacks & drinks with your travel expert.

📍 DESTINATION

Serengeti National Park



🏠 ACCOMMODATION

Lahia Tented Lodge



Day 7: Flight out of Serengeti

Today, you'll embark on an unforgettable adventure: an airplane flight over the picturesque landscapes of Tanzania. If you'd like to have a short morning game-drive, we recommend that you have breakfast as early as possible — the guide will try to find exciting animal sightings on the way to the airstrip. Another option is to pack up without a rush, have breakfast and leave the lodge in time for your departure flight. You can choose what's best for you on the spot - the guide will accommodate your wish!

📍 DESTINATION

Serengeti National Park



Arusha Town



🏠 ACCOMMODATION

Ngare Sero Mountain Lodge



Day 8: Departure

Rest in the hotel and transfer to the airport.

Note: Hotel check-out is at 10:00 AM. In case you need a late check-out before your evening flight, you have the option to extend your hotel stay for an extra fee. Let your manager know in advance if you need a late check-out.

📍 DESTINATION

Kilimanjaro International Airport JRO



🏠 ACCOMMODATION

No Accommodation

WHAT'S INCLUDED & EXCLUDED

Included

- ⊙ All transfers described in the programme (airport meet-and-greet, lodge ? park gate)
- ⊙ Accommodation and meals as stated each night (B = breakfast, FB = full board on safari nights)
- ⊙ Bottled water, soft drinks, coffee and tea while on game drives in the vehicle
- ⊙ Private 4x4 safari Land Cruiser with pop-up roof, fridge, Wi-Fi where signal allows, charging ports
- ⊙ Certified English-speaking safari guide
- ⊙ Park entry and concession fees for the route as quoted
- ⊙ AMREF Flying Doctors air-evacuation cover for the safari segment (as per policy)
- ⊙ Binoculars (1 per vehicle) and onboard medical kit
- ⊙ 24/7 in-country support from Serengeti Nexus

Excluded

- ⊗ International flights and airport taxes
- ⊗ Tanzania visa fees
- ⊗ Travel insurance (required — confirm cancellation and evacuation coverage)
- ⊗ Tips for guide (industry guideline often USD 30–50 per vehicle per day — at your discretion)
- ⊗ Alcoholic drinks and premium beverages at lodges
- ⊗ Hot-air balloon flights (optional add-on where offered)
- ⊗ Personal expenses, laundry and souvenirs
- ⊗ Single room supplements unless quoted

PRICING INFORMATION

All prices are per person in USD and may vary based on season and group size.

Low Season

April 1 - May 31

GROUP SIZE	SOLO	2 PAX	3 PAX	4 PAX	5 PAX	6+ PAX
6-day	\$21,535	\$13,104	\$11,233	\$9,889	\$9,400	\$9,400

Mid Season

March 1 - March 31, November 1 - December 15

GROUP SIZE	SOLO	2 PAX	3 PAX	4 PAX	5 PAX	6+ PAX
6-day	\$21,535	\$13,104	\$11,233	\$9,889	\$9,400	\$9,400

High Season

June 1 - October 31, December 16 - February 28

GROUP SIZE	SOLO	2 PAX	3 PAX	4 PAX	5 PAX	6+ PAX
6-day	\$21,535	\$13,104	\$11,233	\$9,889	\$9,400	\$9,400

Group Discount: The more travelers, the lower the price per person. Perfect for families and groups!