

A photograph of a baboon sitting on a tree branch in a savanna landscape. The baboon is the central focus, with its body and head visible. The background shows a blurred savanna with tall grass and trees. The text is overlaid on the image in white, bold, sans-serif font.

**SAFARI TOUR 'TOPI': 6-
DAY MANYARA,
NGORONGORO &
SERENGETI**

6 Days / 5 Nights

Safari Tour 'Topi': 6-Day Manyara, Ngorongoro & Serengeti

Duration: 6 Days / 5 Nights

Type: Private Safari

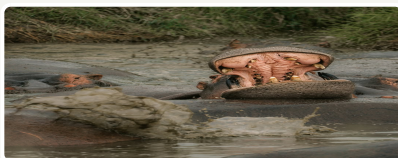
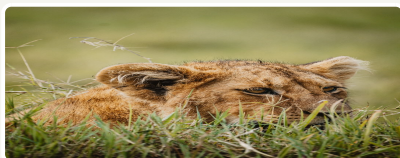
Main Focus: Wildlife

Country: Tanzania

Safari Tour 'Topi': 6-Day Manyara, Ngorongoro & Serengeti — Tanzania safari with Serengeti Nexus

Same day-by-day order as Serengeti Nexus classic Manyara ? Ngorongoro (incl. Serengeti transfer) ? Serengeti ? return toward Arusha. Private 4x4 Land Cruiser, experienced English-speaking guide, and hand-picked lodges. Itinerary adapts slightly to season and wildlife movements — your consultant confirms nightly camps before travel.

Pricing follows published northern-circuit tiers with **USD 50 off** each per-person bracket versus common list rates — see calculator on your proposal. Serengeti Nexus operates with the same safety, park-rule and ethical-wildlife standards you expect on a world-class Tanzanian safari.



DESTINATIONS



Serengeti National Park



Ngorongoro Conservation Area



Arusha Town



Kilimanjaro International Airport JRO



Tarangire National Park

DAY-BY-DAY ITINERARY

Day 1: Arrival

The group arrives at Kilimanjaro Airport (JRO). Participants are met by a representative of Serengeti Nexus and transferred to a hotel in Arusha.

Note: The hotel cost only includes breakfast. Check-in starts at 2:00 PM.

DESTINATION

Arusha Town



ACCOMMODATION

Ngare Sero Mountain Lodge



Day 2: Tarangire National Park

In the morning, after breakfast (around 7:30 AM), your safari guide will arrive at the hotel. After meeting your guide, you will head to Tarangire National Park, and by 10:00 AM, your first safari will begin!

In this park, you'll have the opportunity to see a variety of wild Tanzanian animals, such as lions, buffaloes, giraffes, zebras, and more. However, it is most famous for its remarkable population of elephants, who tend to stay near their drinking source, the Tarangire River.

Please note that this is the wild, natural environment, so your guide cannot guarantee the presence of specific animals. However, you can rest assured that he will do his best to find everything you're hoping to see! Using the radio channel, the Serengeti Nexus guides communicate with each other and collaborate in searching for rare species.

At lunchtime, you'll be provided with a meal, after which the safari will continue. In the evening, you'll be transferred to your hotel en route to Ngorongoro Crater - a unique destination that you'll visit the next morning!

Additional notes:

This is your first day on safari, so we kindly ask that you pay special attention to the national park visitor rules and our company's recommendations:

- It is strictly prohibited to exit the vehicle during the safari, except in designated areas. Violating this rule may result in significant fines for the company, including the revocation of its license.
- Off-road driving is also prohibited as it can cause irreparable damage to the delicate balance of the park's ecosystem.
- Smoking is allowed during the safari, but please be extremely careful when extinguishing and disposing of cigarette butts, as they are a frequent cause of fires in the savanna.
- We kindly ask that you do not put your feet on the seats or sit on the backs of the safari vehicle's seats, as such behavior quickly damages the vehicle.

Thank you in advance for your understanding!

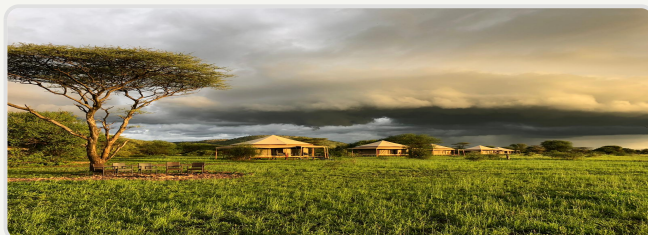
DESTINATION

Tarangire National Park



ACCOMMODATION

Sound of Silence — Lake Manyara



Day 3: Ngorongoro Conservation Area

On this day, it is best to leave the hotel as early as possible to maximize your chances of seeing the animals that are most active in the morning. Depending on whether you'd like to extend your safari time, breakfast can either be served at the hotel or packed in lunchboxes for you to enjoy on the go. At 7:00 AM, you will depart for Ngorongoro Conservation Area, and after about an hour, you will enter the crater.

Ngorongoro is one of the most famous and fascinating national parks in Tanzania, as it is home to the highest concentration of animal species per square kilometer. During your visit, you'll have the chance to see buffalo, elephants, lions, wildebeests, zebras, hippos, and feline species like caracals and servals. The luckiest travelers may even spot a rhinoceros, whose population is rapidly declining.

By lunchtime, you will arrive at the lakeside, where you will be offered lunchboxes. Afterward, the safari will continue, and a few hours later, you will be transferred to Serengeti National Park.

Along the way, you can visit a memorial dedicated to two West German researchers, Bernhard and Michael Grzimek. Thanks to their efforts, Northern Tanzania's National Parks have survived in their natural state until today. You can read their full story in the book "Serengeti Shall Not Die", available on Amazon.com for USD 10–25.

In the evening, you will be transferred to a hotel located in the heart of the Serengeti Valley.

📍 DESTINATION

Ngorongoro Conservation Area



🏠 ACCOMMODATION

Kubu Kubu Tented Lodge



Day 4: Serengeti National Park

Today you begin the safari in the most famous safari park in the world - Serengeti. This is one of the largest parks in Tanzania and has a large population of wildlife. Here, you are sure to see: lions, antelopes, elephants, giraffes, buffaloes and zebras. There is a good chance of spotting cheetahs, serval cats and other rare animals of the African savannah. The Serengeti is a designated UNESCO World Heritage Site, chosen because of its important ecosystem, the dense population of animals and the annual Great Migration. Serengeti was the inspiration for Disney's "Lion King" feature film, but life here is not a cartoon - it is pure, wild and beautiful. The day will take place in the central Serengeti, in a remarkably beautiful area called Seronera.

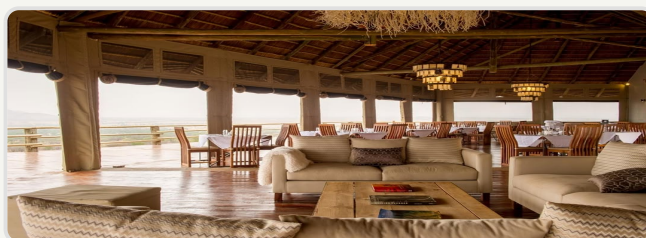
📍 DESTINATION

Serengeti National Park



🏠 ACCOMMODATION

Kubu Kubu Tented Lodge



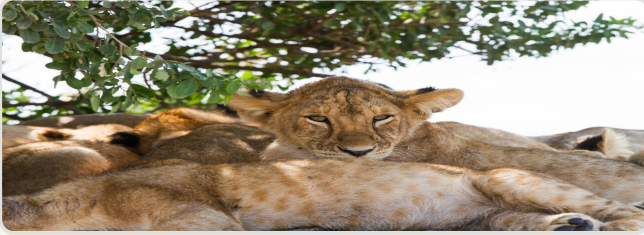
Day 5: Serengeti National Park

Your adventure continues in the central part of the Serengeti. Every day in the savannah provides something new and exciting, you will not have a repeat of previous days, but will experience something genuinely new: yesterday's lazy lions might be on the prowl today, elephants that walked away will be curious today. It is also an excellent chance to see the famous Kopjes - these remnants of volcanic rock from ancient eruptions are a picturesque part of the Seronera landscape. Animals love to rest in their shade, providing ideal photographs of your time in Central Serengeti.

You'll also see the Simba Rock - Remember the opening scene of "The Lion King" where Mufasa lifts up baby Simba to see all the savannah? Well, you can see it in real life! In Seronera, visit the inspiration for The Lion King, and see the exact rock that was copied for the cartoon.

📍 DESTINATION

Serengeti National Park



Arusha Town



🏠 ACCOMMODATION

Ngare Sero Mountain Lodge



Day 6: Departure

Rest in the hotel and transfer to the airport.

Note: Hotel check-out is at 10:00 AM. In case you need a late check-out before your evening flight, you have the option to extend your hotel stay for an extra fee. Let your manager know in advance if you need a late check-out.

📍 DESTINATION

Kilimanjaro International Airport JRO



🏠 ACCOMMODATION

No Accommodation

WHAT'S INCLUDED & EXCLUDED

Included

- ⊙ All transfers described in the programme (airport meet-and-greet, lodge ? park gate)
- ⊙ Accommodation and meals as stated each night (B = breakfast, FB = full board on safari nights)
- ⊙ Bottled water, soft drinks, coffee and tea while on game drives in the vehicle
- ⊙ Private 4x4 safari Land Cruiser with pop-up roof, fridge, Wi-Fi where signal allows, charging ports
- ⊙ Certified English-speaking safari guide
- ⊙ Park entry and concession fees for the route as quoted
- ⊙ AMREF Flying Doctors air-evacuation cover for the safari segment (as per policy)
- ⊙ Binoculars (1 per vehicle) and onboard medical kit
- ⊙ 24/7 in-country support from Serengeti Nexus

Excluded

- ⊗ International flights and airport taxes
- ⊗ Tanzania visa fees
- ⊗ Travel insurance (required — confirm cancellation and evacuation coverage)
- ⊗ Tips for guide (industry guideline often USD 30–50 per vehicle per day — at your discretion)
- ⊗ Alcoholic drinks and premium beverages at lodges
- ⊗ Hot-air balloon flights (optional add-on where offered)
- ⊗ Personal expenses, laundry and souvenirs
- ⊗ Single room supplements unless quoted

PRICING INFORMATION

All prices are per person in USD and may vary based on season and group size.

Low Season

April 1 - May 31

GROUP SIZE	SOLO	2 PAX	3 PAX	4 PAX	5 PAX	6+ PAX
6-day	\$4,465	\$2,717	\$2,329	\$2,050	\$1,949	\$1,949

Mid Season

March 1 - March 31, November 1 - December 15

GROUP SIZE	SOLO	2 PAX	3 PAX	4 PAX	5 PAX	6+ PAX
6-day	\$4,465	\$2,717	\$2,329	\$2,050	\$1,949	\$1,949

High Season

June 1 - October 31, December 16 - February 28

GROUP SIZE	SOLO	2 PAX	3 PAX	4 PAX	5 PAX	6+ PAX
6-day	\$4,465	\$2,717	\$2,329	\$2,050	\$1,949	\$1,949

Group Discount: The more travelers, the lower the price per person. Perfect for families and groups!